

Introduction

Broken Hill Operations Pty Ltd (BHOP) is seeking approval to resume full scale mining operations at its Rasp Mine in Broken Hill.

This newsletter provides information about the proposal, the statutory approvals process, and the issues that will be addressed as part of the environmental impact assessment process. It also provides information on opportunities for public consultation.

Location

Rasp Mine is located within Consolidated Mining Lease (CML) 7. Refer to Figure 1. CML 7 encompasses the original mine areas that commenced operations in the 1880's. CML 7 is about 3.8 km long and 1.2 km wide located in the centre of the Line of Lode at Broken Hill.

Overview of the Proposal

A two stage operation is proposed to mine the zinc, lead and silver deposit located on the western side of CML 7.

Stage One comprises the extraction of a relatively small volume of remnant material from the base of the Kintore Pit, over an estimated period of five months. Stage Two comprises underground mining of the western mineralisation deposit. Mining will take place over a period of approximately 12 years, removing approximately 750,000 tonnes of ore per annum. Stage One extraction will be conducted by controlled blasting with the extracted material loaded into haulage trucks and stockpiled. Stage Two underground mining of the ore will occur using long hole bench stoping.

Ore processing facilities including a three staged surface crusher and flotation concentrator would be

established at the mine to process the extracted material.

BHOP is mindful of the historic significance of the site and intends to retain and reuse the heritage buildings on site. This will ensure that these important buildings are retained and renovated.

A rail spur will be re-established at the mine to allow concentrate to be transported to a smelter and/or port via rail. There will be no need for offsite road haulage of product concentrate. The location of the western mineralisation deposit is shown in Figure 2.

Planning Framework

The proposal will need approval from the Minister of Planning under the NSW *Environmental Planning and Assessment Act 1979 (EP&AA Act)*.

Environmental Resources Management (ERM) has been commissioned by BHOP to prepare an Environmental Assessment Report (EAR) for the proposed mining operation. The EAR, will assess the likely impact of a project on the environment and will accompany the application to the Minister.



Figure 1
Locality Map

Potential Issues

During the environmental scoping review, the following environmental issues were identified as being of particular significance to the proposal:

- Potential noise and vibration issues associated with mine construction and operation;
- Potential air quality issues related to dust including air borne lead; and
- Potential impact to historically significant heritage structures and values present at the site.

These issues, along with potential impacts to traffic and transport, water management and visual aspects, will be addressed within the EAR.

Community Consultation

BHOP wants to make sure that the community of Broken Hill have opportunities to gain information on the project and express their views.

Newsletters, the open community consultation session (see below for details) and quarterly Community Consultative Committee meetings are being undertaken.

In addition, when the EAR is completed and prior to approval, it will be placed on public exhibition by the Department of Planning to enable feedback from interested parties.

Project Timing

BHOP wants to lodge application with the Minister of Planning in September 2007. Subject to obtaining the necessary approvals, proposed operations will aim to commence in August 2008.

Community Benefits

Some community benefits relating to the proposal include:

- Employment opportunities for Broken Hill

residents. During operations approximately 96 people will be directly employed at the site;

- Economic benefits to the Broken Hill community via capital injection and value added spending; and
- Preservation of the historic heritage significance of the site for future generations.

Further Information

An open community consultation session is being held on July 31st at the Musician's Club from 3 pm to 7pm. If you would like further information on the proposal please come and visit the Rasp Mine Environmental Assessment Team at any time during this session.

If you are unable to attend but would like more information, please contact Joan Simons on 08 80889111 or email your comments to joansimons@cbhresources.com.au.

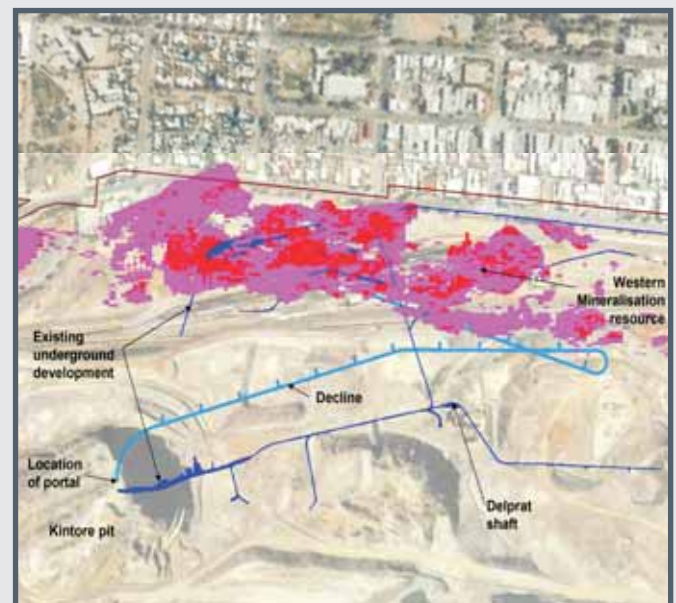


Figure 2
Western Mineralisation Deposit

PUBLIC NOTICE

CBH Resources wishes to advise that an application for approval under Part 3A of the Environmental Planning and Assessment Act 1979 was submitted by Broken Hill Operations Pty Ltd on 7th February 2007 to the NSW Department of Planning. The application is seeking approval for the commencement of mining operations at the proposed Rasp Mine on CML7. The activities to be undertaken at the site include the extraction and processing of ore as well as transportation of this resource.

Notice of the application is given in accordance with Clause 8F(3) of the Environmental Planning and Assessment Regulation 2000.

Visko Sulicich
Mine Manager
Rasp Mine

To be Advertised in Barrier Daily Truth:

Friday, February 16 and Saturday, February 17, 2007