



ENDEAVOR OPERATIONS PTY LTD

ENDEAVOR MINE

MONTHLY ENVIRONMENTAL REPORT

September
2023

Name of Operation	Endeavor Mine
Name of Licensee	Endeavor Operations Pty Ltd
Environmental Protection Licence	No: 1301
Reporting Period Start Date	1 September 2023
Reporting End Date	30 September 2023

TABLE OF CONTENTS

1	INTRODUCTION.....	3
2	MONITORING RESULTS	3
2.1	Dust Monitoring.....	3
2.1.1	Dust Monitoring Methodology and Limits	4
2.1.2	Monitoring Locations.....	4
2.1.3	Dust Monitoring Data.....	5
2.2	Groundwater Monitoring.....	6
2.2.1	Monitoring Locations.....	6
2.2.2	Monitoring Results Data	8
2.3	Tailings Deposition.....	9
2.3.1	Tailings Deposition: Data and Discussion	10
3	RESULTS LOG	10
4	COMPLAINTS HOTLINE	10

FIGURES LIST

Figure 2.1	Dust monitoring gauge located in the project	3
Figure 2.2	Endeavor Mine Dust Monitoring Locations.....	5
Figure 2.3	Location of the Piezometer Monitoring Locations	8

TABLES LIST

Table 2-1	Endeavor Mine Air Monitoring Requirements	4
Table 2-2	Dust monitoring results September 2023.	5
Table 2-3	EPA Monitoring Stations	6
Table 2-4	EPA Monitoring Parameters.....	7
Table 2-5	Groundwater Monitoring Results September 2023.....	9
Table 3-1	Laboratory results log.....	10

1 INTRODUCTION

We at Endeavor Mine conduct systematic and periodic environmental monitoring of our operations to substantiate the effectiveness of our environmental controls which are in place to protect the environment, the health of our workers, our neighbours and the greater community. The results in this report correspond to September 2023. This report publishes the summary of the environmental monitoring carried during this month for dust deposition, tailings deposition and groundwater. All monitoring is conducted in accordance with regulatory requirements and the EOPL Annual Environmental Monitoring Plan. Samples are collected and handled in accordance and compliance with regulatory requirements and taken to laboratories accredited by the National Association of Testing Authorities (NATA) for analysis.

2 MONITORING RESULTS

2.1 Dust Monitoring

Air quality aspects and impacts associated with site operations are managed in accordance with the Air Quality Management Plan (END-PLN-ENV-006) and the requirement detailed in NSW Environmental Protection Licence 1301.

The Endeavor Mine is located 47 km from the nearest town (Cobar) and 4.5 km away for its nearest sensitive receptor (residential property). Therefore, dust deposition at these potential receptors is considered a low environmental risk.

Nevertheless, dust deposition on and beyond the boundary of the lease has the potential to cause environmental harm. Therefore Endeavor Mine manages airborne contaminants on site through the use of water sprays and a water trucks with depositional dust monitoring stations strategically located along the boundary of ML158/159/160/161 to measure performance.



Figure 2.1 Dust monitoring gauge located in the project

Monthly Environmental Report

For Month Ending 30th September 2023

2.1.1 Dust Monitoring Methodology and Limits

The Endeavor Mine Dust Monitoring Program measures dust deposition rates on a monthly basis at the main mining lease boundary (4 locations) and at a background location located 11km from the operating mine site (DDG 5 – Point ID 5). EP Licence 1301 does not set limits for dust deposition. The Endeavor mine has chosen deposition rate for total insoluble matter when expressed as a 12 month rolling average should not exceed 4 g/m²/month and that site activities should not generate dust emissions which result in a dust deposition rate greater than 2 g/m²/month above background levels on an annual average. Table 2-1 describes the Pollutant, Units of Measure, Monitoring Frequency and Method of Sampling.

2.1.2 Monitoring Locations

Table 2-1 Endeavor Mine Air Monitoring Requirements

Point ID	Pollutant	Unit of measure	Frequency	Sampling Method
1 (DDG1)	Particulates - Deposited matter	grams per square metre per month	Monthly	AM-19
2 (DDG2)	Particulates - Deposited matter	grams per square metre per month	Monthly	AM-19
3 (DDG3)	Particulates - Deposited matter	grams per square metre per month	Monthly	AM-19
4 (DDG4)	Particulates - Deposited matter	grams per square metre per month	Monthly	AM-19
5 (DDG5)	Particulates - Deposited matter	grams per square metre per month	Monthly	AM-19

As shown in the satellite image (Figure 2.2), there are 5 dust monitoring locations on the boundary of the lease, with one located 11kms from the site at the turnoff to the Mine site near the Louth Road. This station was positioned to establish background levels.

Monthly Environmental Report

For Month Ending 30th September 2023



Figure 2.2 Endeavor Mine Dust Monitoring Locations

2.1.3 Dust Monitoring Data

This report shows the results from the dust monitoring activities carried out between 15-08-2023 to 12-09-2023 (Table 2-2). All values remain well under the recommended guidance values.

Table 2-2 Dust monitoring results September 2023.

Monitoring locations Monitoring from 15/08/23 - 12/09/2023						
Parameters	Unit	DDG1	DDG2	DDG3	DDG4	DDG5
Total soluble matter	g/m2*month	1.3	0.2	1.3	0.4	0.4
Total insoluble matter	g/m2*month	1.3	1.2	1	2.3	1.3

2.2 Groundwater Monitoring

Deep regional groundwater flows to the south west, conforming to the structural dip of the underlying sedimentary rocks. Groundwater inflow into the mine is observed at a depth range of between 60 to 80 m below ground surface. A shallow, perched aquifer occurs is found in the vicinity of the Central Tailings Discharge CTD between approximately 0.5 to 13 m below ground surface. This aquifer is recharged by rainfall and seepage water from the operational TSF via a permeable gravelly soil layer in the area.

A review of groundwater characteristics undertaken by consultants Environmental Earth Sciences (EES) in 2013 indicates there is no interface between the shallow perched water and the deep regional aquifer.

Groundwater quality at the mine is generally poor due to the high salinity. The water has been sampled by NSW Water Conservation and Irrigation for the original Environmental Impact Statement (EIS) could be considered “brackish” and was found to have an electrical conductivity (EC) of 26,000 $\mu\text{S}/\text{cm}$ (sea water is approximately 30,000 $\mu\text{S}/\text{cm}$). Further, it was noted that the water was not suitable for stock, domestic or farm use. Potential contamination of the groundwater would be of low risk due to the naturally poor quality of the water.

2.2.1 Monitoring Locations

Endeavor Mine’s groundwater monitoring locations are concentrated around the perimeter of the Central Tailings Discharge (CTD) and the Sector 5 Tailings Storage Facility (CTF), while surface water monitoring locations are focused on water storages that could potentially discharge to environment during a major rain or storm event. Table 2-3 describes the monitoring stations, where Figure 2.3 shows the locations of the piezometers. Depending on availability of water or flow, unfortunately on some occasions, piezometers cannot be monitored as a result of being dry. Parameters to be monitored are described in

Table 2-4.

Table 2-3 EPA Monitoring Stations

EPA ID	Type of monitoring point	Location description
9	Groundwater monitoring point	PZ Labeled as BH02
10	Groundwater monitoring point	PZ Labeled as BH02B
11	Groundwater monitoring point	PZ Labeled as BH03
12	Groundwater monitoring point	PZ Labeled as BH06
13	Groundwater monitoring point	PZ Labeled as BH08A
14	Groundwater monitoring point	PZ Labeled as BH09
15	Groundwater monitoring point	PZ Labeled as BH10
16	Groundwater monitoring point	PZ Labeled as BH10B
17	Groundwater monitoring point	PZ Labeled as BH12B
18	Groundwater monitoring point	PZ Labeled as BH14
19	Groundwater monitoring point	PZ Labeled as BH15
20	Groundwater monitoring point	PZ Labeled as BH16
25	Groundwater monitoring point	PZ Labeled as BH13

Monthly Environmental Report

For Month Ending 30th September 2023

Table 2-4 EPA Monitoring Parameters

Pollutant	Unit of measure	Frequency	Sampling method
Arsenic	milligrams per litre	Quarterly	Representative sample
Cadmium	milligrams per litre	Quarterly	Representative sample
Calcium	milligrams per litre	Quarterly	Representative sample
Chloride	milligrams per litre	Quarterly	Representative sample
Copper	milligrams per litre	Quarterly	Representative sample
Cyanide (total)	milligrams per litre	Quarterly	Representative sample
Electrical conductivity	milligrams per litre	Quarterly	Representative sample
Iron	milligrams per litre	Quarterly	Representative sample
Lead	milligrams per litre	Quarterly	Representative sample
Magnesium	milligrams per litre	Quarterly	Representative sample
Manganese	milligrams per litre	Quarterly	Representative sample
Mercury	milligrams per litre	Quarterly	Representative sample
pH	pH	Quarterly	Representative sample
Potassium	milligrams per litre	Quarterly	Representative sample
Sodium	milligrams per litre	Quarterly	Representative sample
Standing water level	metres	Quarterly	Representative sample
Sulfate	milligrams per litre	Quarterly	Representative sample
Total dissolved solids	milligrams per litre	Quarterly	Representative sample
Zinc	milligrams per litre	Quarterly	Representative sample

Monthly Environmental Report

For Month Ending 30th September 2023

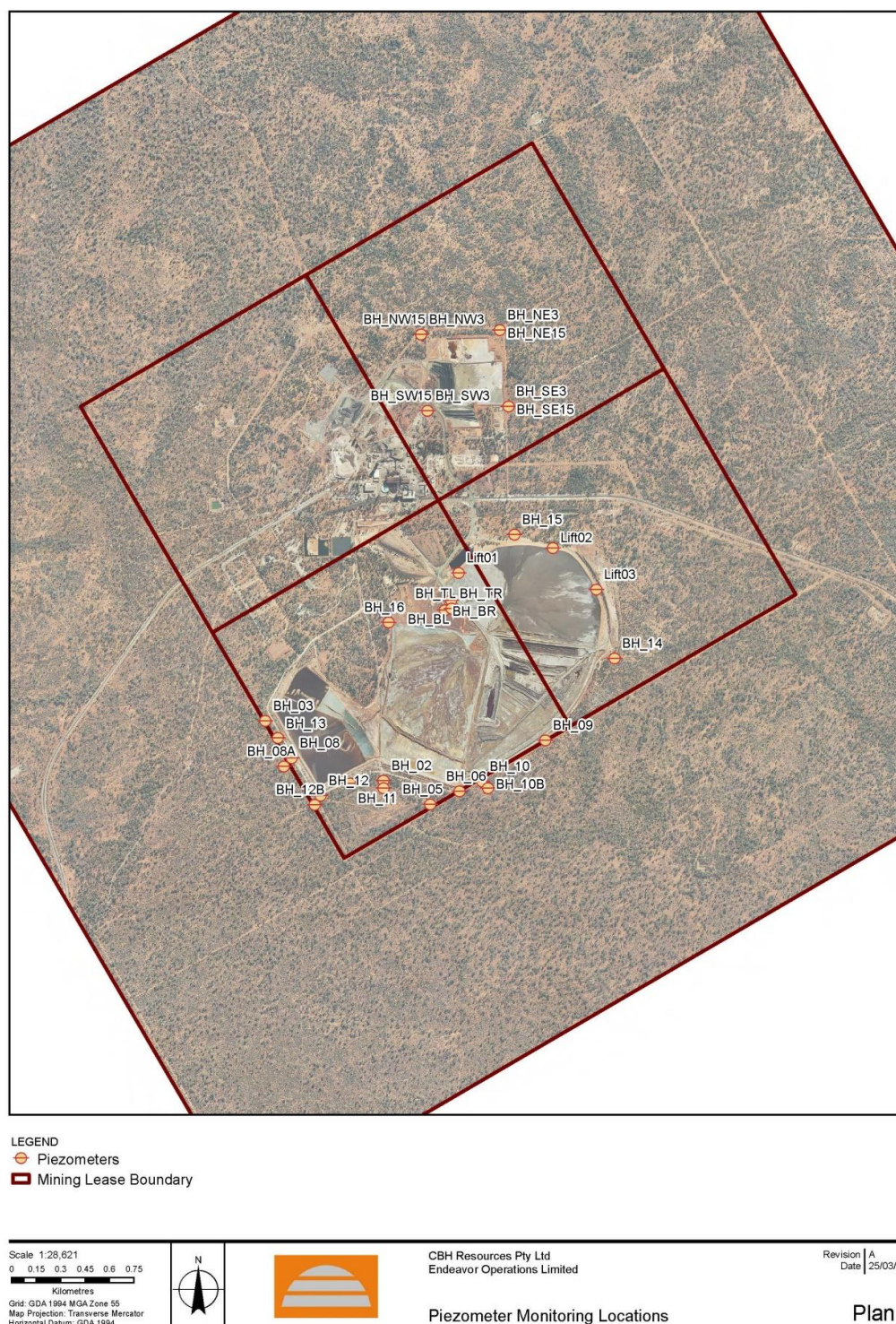


Figure 2.3 Location of the Piezometer Monitoring Locations

2.2.2 Monitoring Results Data

Groundwater monitoring was carried out in September 2023. Please refer to table below and to June 2023 for most recent ground water results.

Monthly Environmental Report

For Month Ending 30th September 2023

Table 2-5 Groundwater Monitoring Results September 2023

Monitoring Locations (EPA ID)			BH 02	BH 02B	BH 06	BH 08A	BH 09	BH 10	BH 10B	BH 12B	BH 14	BH 15	BH 16	BH 13B
Standing Water Levels (m)			2.28	3.3	3.94	2.12	3.85	3.87	4.3	4.5	4.3	3.83	3.8	3.9
pH Value	Lab	pH Unit	7.16	7.09	5.73	7.85	7.11	7.53	7.63	7.41	7.51	7.39	6.65	7.16
Elect. Cond.	Lab	µS/cm	16200	19100	186	29800	16100	28000	19000	25500	16500	24700	29500	32500
Temp	Field	C	20.53	20.55	20.57	20.80	21.00	20.93	20.95	22.00	22.30	22.50	22.30	22.50
Total Dissolved Solids @180Å°C		mg/L	16100	19100	18600	31600	27600	25400	18800	21600	15800	25500	25900	29400
Sulfate as SO4 -		mg/L	7740	8730	15000	6590	15600	10000	9000	5880	7510	11400	5480	6300
Chloride		mg/L	2600	3380	1570	9090	2980	6070	3080	7110	2940	4960	8870	9610
Calcium		mg/L	644	582	524	702	637	527	503	802	554	578	901	825
Magnesium		mg/L	1570	2000	2110	1500	3710	1060	1400	1340	1410	2110	1220	1690
Sodium		mg/L	1890	2300	1180	5440	3240	5750	2960	4050	2120	3830	4880	5240
Potassium		mg/L	107	99	105	216	333	232	206	224	155	186	104	206
Arsenic		mg/L	0.350	0.083	1.6	0.001	0.010	0.017	0.007	0.006	0.007	0.004	0.002	0.003
Cadmium		mg/L	0.001	0.001	0.0440	0.0001	0.010	0.0007	0.0001	0.0001	0.0001	0.0002	0.0105	0.0012
Copper		mg/L	0.001	0.001	0.001	0.002	0.010	0.005	0.001	0.001	0.001	0.002	0.001	0.001
Lead		mg/L	0.002	0.739	0.005	0.001	0.240	0.068	0.002	0.001	0.002	0.007	0.001	0.0012
Manganese		mg/L	10	7.26	74.08	4.48	19	0.43	0.495	4.73	1.39	0.040	36.7	11.7
Zinc		mg/L	0.20	0.047	110	0.019	0.166	0.450	0.18	0.018	0.025	0.095	57.7	0.476
Iron		mg/L	3.27	0.05	1950	0.05	6.12	0.50	0.05	0.05	0.05	0.05	22.8	1.93
Mercury		mg/L	0.0001	0.0001	0.0001	0.0001	0.0001	0.0001	0.0001	0.0001	0.0001	0.0003	0.0001	0.0001
Total Cyanide		mg/L	0.004	0.004	0.004	0.004	0.004	0.004	0.004	0.004	0.004	0.004	0.004	0.004

Monthly Environmental Report

For Month Ending 30th September 2023

2.3 Tailings Deposition

Tailings (also known as tails or residue) are the material left over after the process of separating the valuable fraction from the uneconomic fraction (waste) of the ore. Tailings are distinct from overburden or waste rock or other material that overlies an ore or mineral body and is displaced during mining without being processed.

The volumes of tailings can be large and require an engineered storage and capacity to safely house them, Depending on the nature of the ore or the type of extraction process, tailings can have the potential to harm the environment unless they are deposited and managed correctly.

The reporting of monthly tailings deposition is a legislative requirement as part of EPL 1301.

2.3.1 Tailings Deposition: Data and Discussion

From the 1st of January 2020 the Mine has entered into Care and Maintenance, no tailings have been produced as there are no ongoing operations.

Table 2-6 Tailings Deposition for September 2023

	Environment Protection Licence Monitoring Point 7		Environment Protection Licence Monitoring Point 8		TOTAL
	Volume of tailings deposited (m ³)	Mass of tailing solids deposited (DMT)	Volume of tailings deposited (KL)	Mass of tailing solids deposited (DMT)	Mass of tailing solids deposited (DMT) YTD
September 2023	-	-	-	-	-

3 RESULTS LOG

Table 3-1 Laboratory results log

Samples	Results received from laboratory
Dust deposition	September 2023
Groundwater	n/a
Date report posted on website	TBA

4 COMPLAINTS HOTLINE

Endeavor Mine has established a complaints hotline for members of the Public to voice any concerns they have with Endeavor Mine activities. The phone number to call is (02) 68306555 or email on enquiries@endeavor.com.au. Endeavor will investigate any complaint and take immediate action if the complaint is validated.